



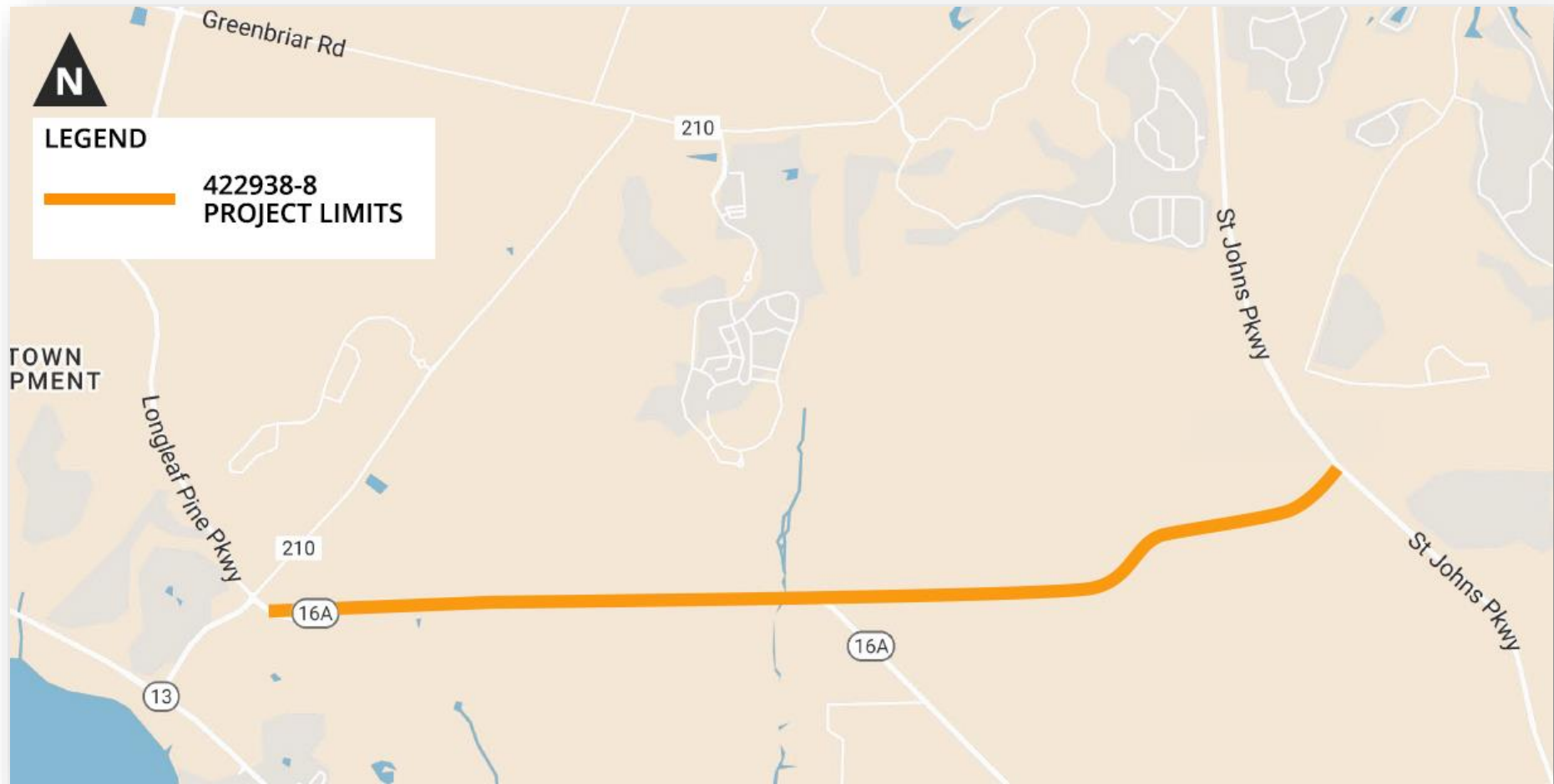
**First Coast Expressway
(East of CR 16A to East of CR 2209)
(FIN 422938-8)**



**Welcome to the
First Coast Expressway
(East of CR 16A to East of CR 2209)
Construction Open House**

St. Johns County, Florida

Project Location



First Coast Expressway from East of CR 16A to East of CR 2209

Project Information

This project consists of a new four-lane limited-access toll facility from east of County Road 16A to east of County Road 2209 in St. Johns County. The project includes milling and resurfacing, earthwork, subsoil excavation, base work, shoulder treatment, drainage improvements, curb and gutter, traffic signals, lighting, highway signing, guardrail, box culverts, bridges, MSE walls, sidewalks/bicycle path, intelligent transportation systems (ITS), tolling, and other incidental construction.

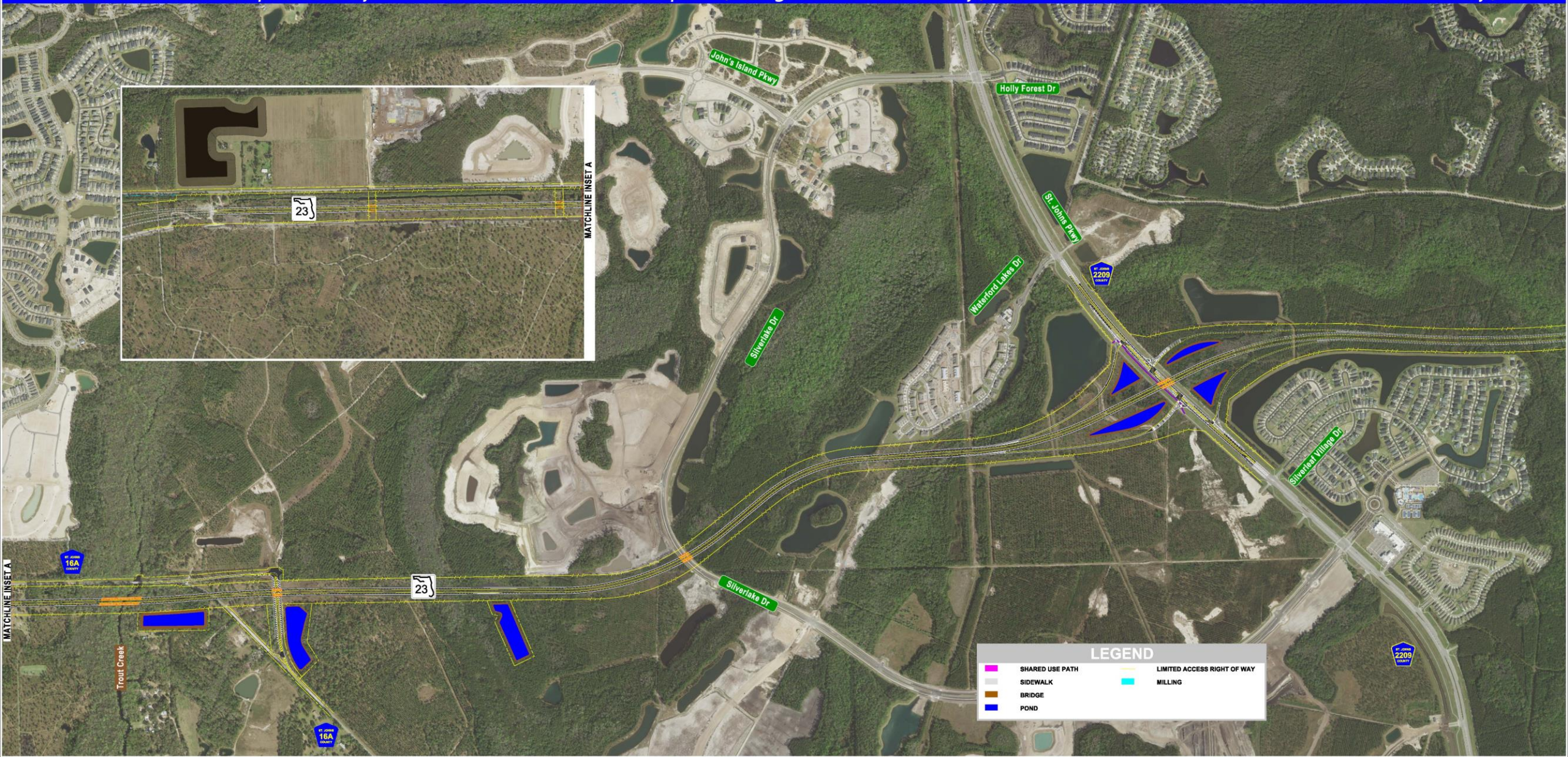
Project Start: November 2024

Estimated Completion: 2030

Project Cost: \$242.6 million

Contractor: De Moya Asphalt Joint Venture

First Coast Expressway - From East of 16A Spur (Longleaf Pine Pkwy) to East of CR2209 (St. Johns Parkway)



FCE/CR 2209 Interchange



FCE/CR 2209 Interchange



FCE/CR 2209 Interchange



Community Impacts

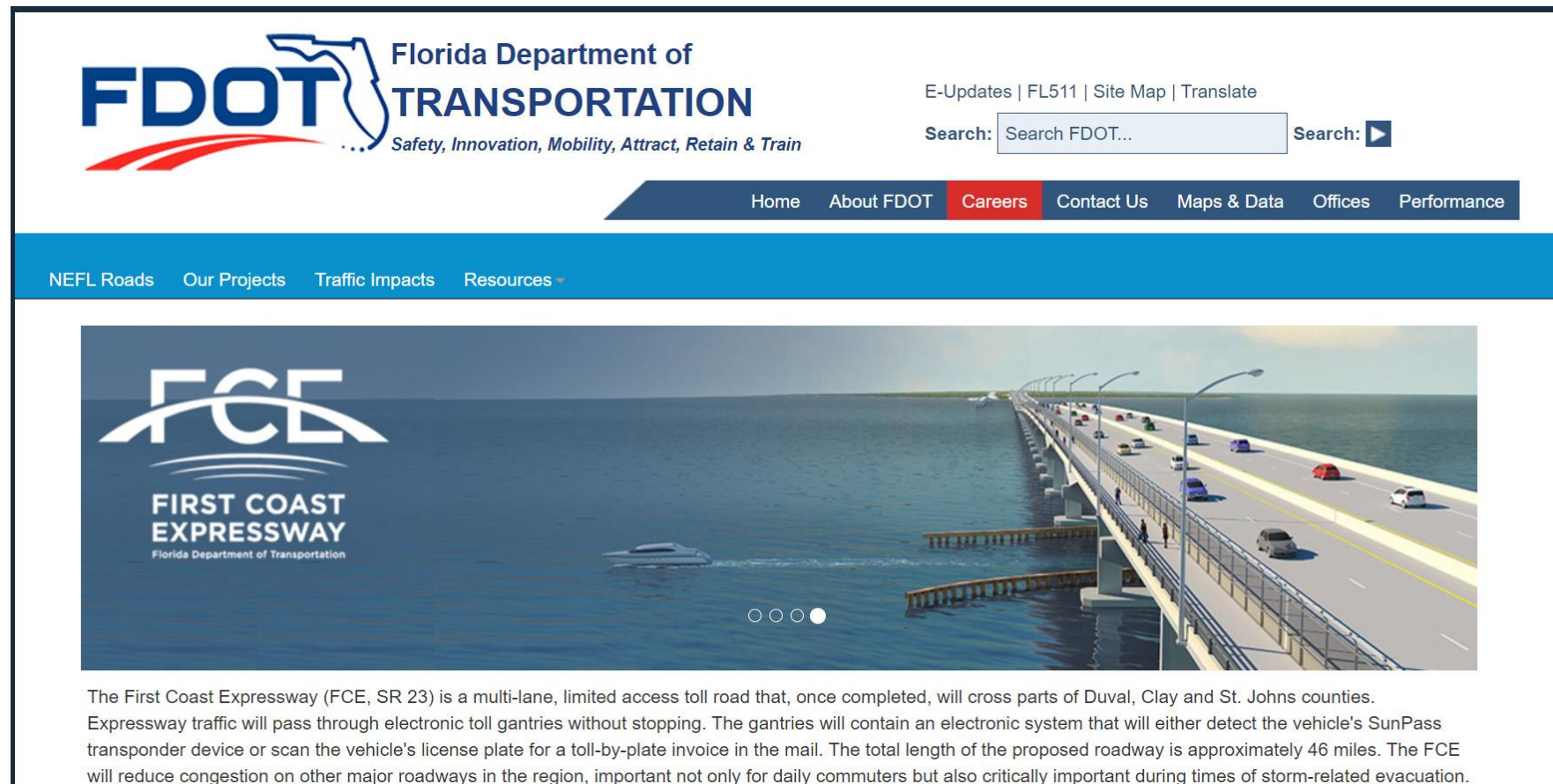
- No lane closures will be permitted on County Road 2209 (St. Johns Parkway) from 7 to 9 a.m.
- No lane closures will be permitted on eastbound County Road 16A from 7 to 9 a.m.
- No lane closures will be permitted on westbound County Road 16A from 4 to 7 p.m.
- No noise walls are planned as part of this project.

Please visit www.firstcoastexpressway.com for more information.

This presentation and other project materials are available for further review at firstcoastexpressway.com.

Click on

First Coast Expressway – East of CR 2209 to East of CR 16A

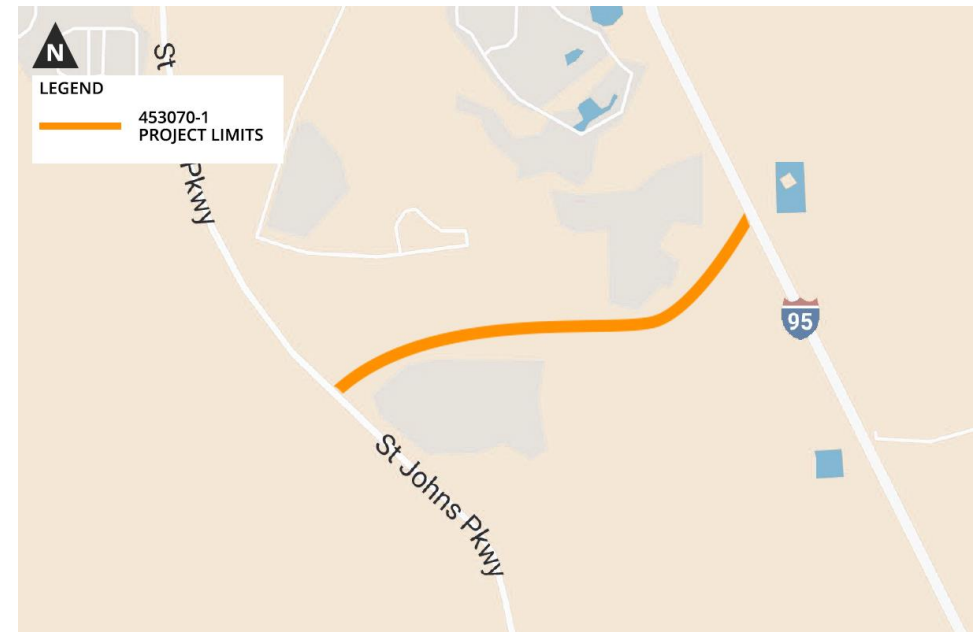


The screenshot displays the FDOT website interface. At the top left is the FDOT logo with the text "Florida Department of TRANSPORTATION" and the tagline "Safety, Innovation, Mobility, Attract, Retain & Train". To the right are links for "E-Updates | FL511 | Site Map | Translate" and a search bar labeled "Search: Search FDOT...". Below this is a navigation menu with "Home", "About FDOT", "Careers", "Contact Us", "Maps & Data", "Offices", and "Performance". A secondary menu includes "NEFL Roads", "Our Projects", "Traffic Impacts", and "Resources". The main content area features a large image of the First Coast Expressway bridge over water, with the FCE logo and "FIRST COAST EXPRESSWAY Florida Department of Transportation" overlaid on the left. Below the image are four small circles, with the third one filled, indicating a slide indicator.

The First Coast Expressway (FCE, SR 23) is a multi-lane, limited access toll road that, once completed, will cross parts of Duval, Clay and St. Johns counties. Expressway traffic will pass through electronic toll gantries without stopping. The gantries will contain an electronic system that will either detect the vehicle's SunPass transponder device or scan the vehicle's license plate for a toll-by-plate invoice in the mail. The total length of the proposed roadway is approximately 46 miles. The FCE will reduce congestion on other major roadways in the region, important not only for daily commuters but also critically important during times of storm-related evacuation.

Adjacent Project

- The final segment of the First Coast Expressway from east of CR 2209 to I-95 (FIN 453070-1) is currently scheduled to let in September 2025, with construction estimated to begin in late 2025 and finish in 2031, weather and unforeseen circumstances permitting.
- This project includes approximately 2.3 miles of new roadway and a major multi-lane interchange at I-95.



Civil Rights Act of 1964

Public participation is solicited without regard to race, color, national origin, age, sex, religion, disability, or family status.

Title VI – Nondiscrimination Program

Persons may file a formal complaint by contacting:

Florida Department of Transportation, District 2

Ms. Dorothy Neal
District 2 Title VI Coordinator
1109 S. Marion Avenue, MS 2013
Lake City, Florida 32025-5874
(386) 961-7616
Dorothy.Neal@dot.state.fl.us

Florida Department of Transportation Equal Opportunity Office

Mr. Stefan Kulakowski
State Title VI Coordinator
605 Suwannee Street MS65
Tallahassee, Florida 32399
(850) 414-4742
Stefan.kulakowski@dot.state.fl.us

Please let us know if you have any questions about the project.

Tips for navigating the webinar will follow.

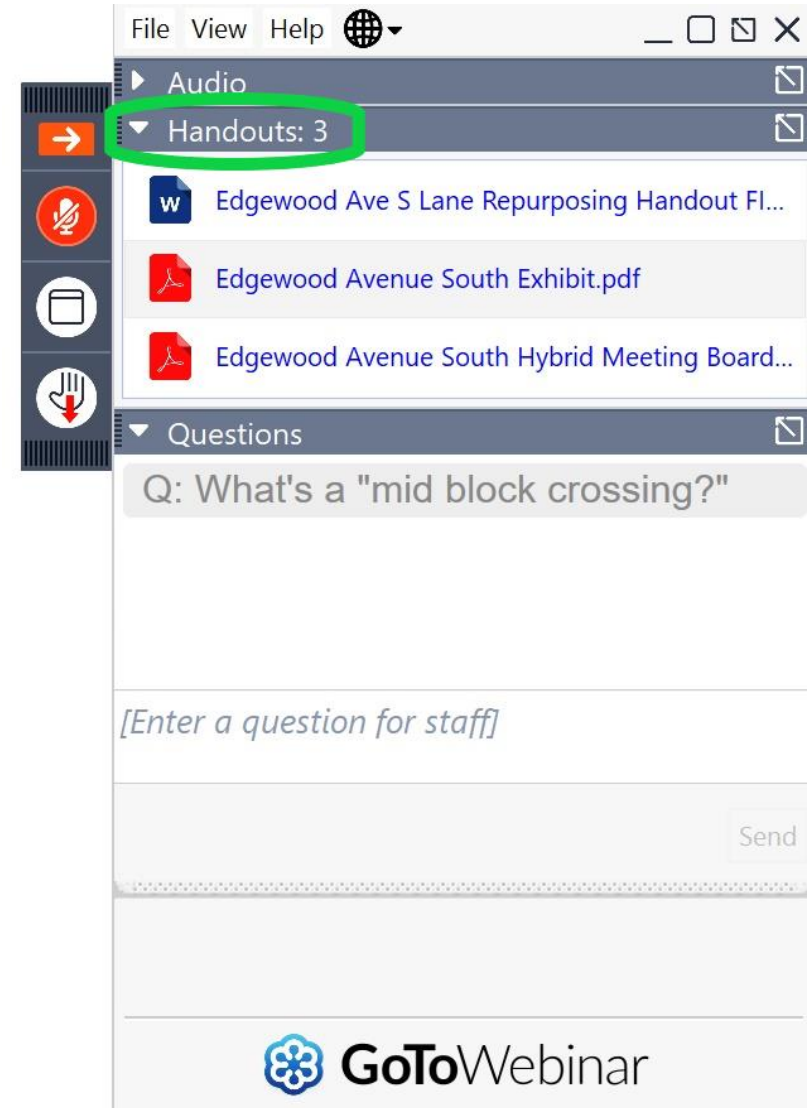
All attendees are placed on mute. If you'd like to ask a question, use the icon to raise your hand. A moderator will call your name to speak and unmute you.

You may also use the question box to type a question. All questions will be answered during the meeting or in a follow-up email after the meeting.

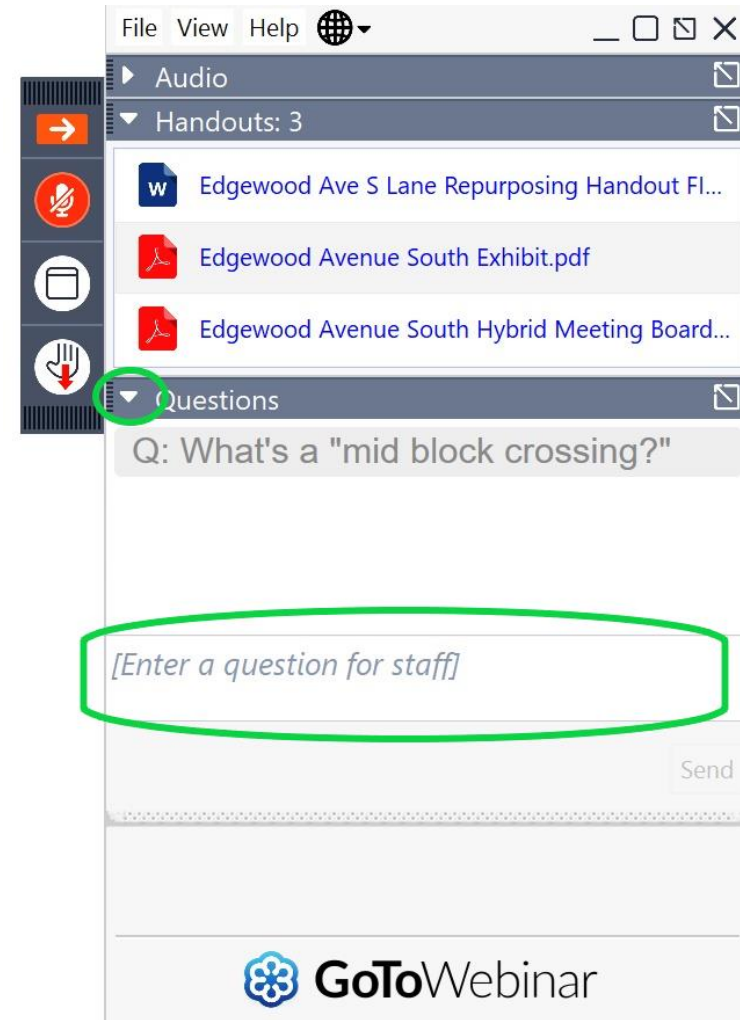
Open your control panel window by clicking on the orange arrow icon.



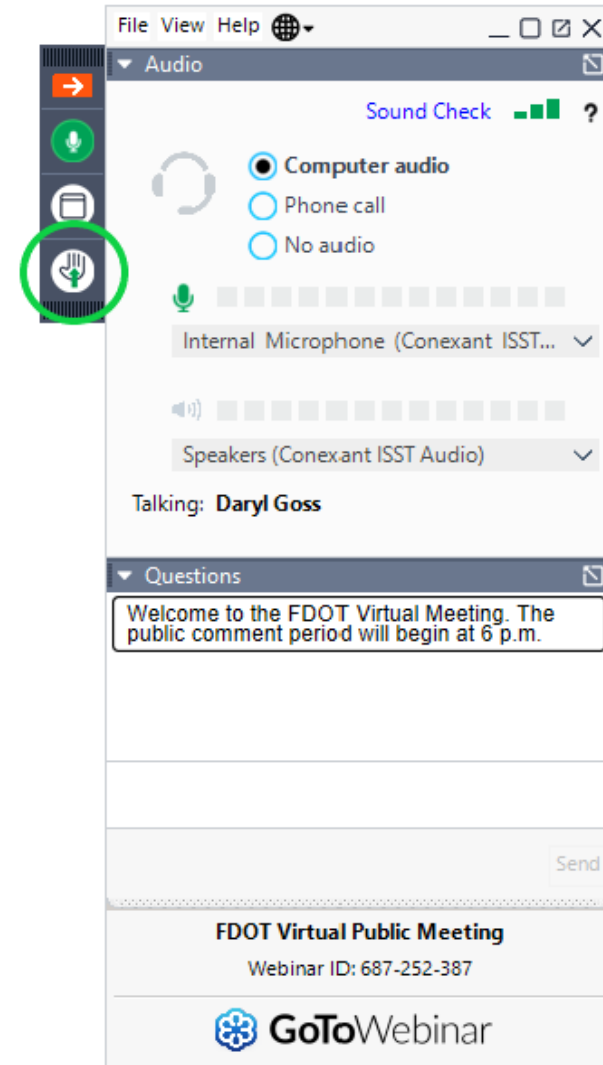
View project-related materials by clicking the dropdown arrow on the Handouts bar and selecting an item.



Ask a written question by clicking the dropdown arrow on the Questions bar and typing your question in the text box.



Raise your hand to speak by clicking on the hand icon. A moderator will unmute your mic and call on you to speak.





**First Coast Expressway
(East of CR 16A to East of CR 2209)
(FIN 422938-8)**



**Thank you for joining us today.
These slides will now repeat.**